

NEBO[®]

ILLUMINATE POSSIBILITIES



2022 CATALOGUE

Calling all doers and
dabblers, thinkers and
tinkerers... keep on
creating, experimenting
and exploring. We'll
continue to imagine
new ways to bring
light to what you do.

NEBO[®]



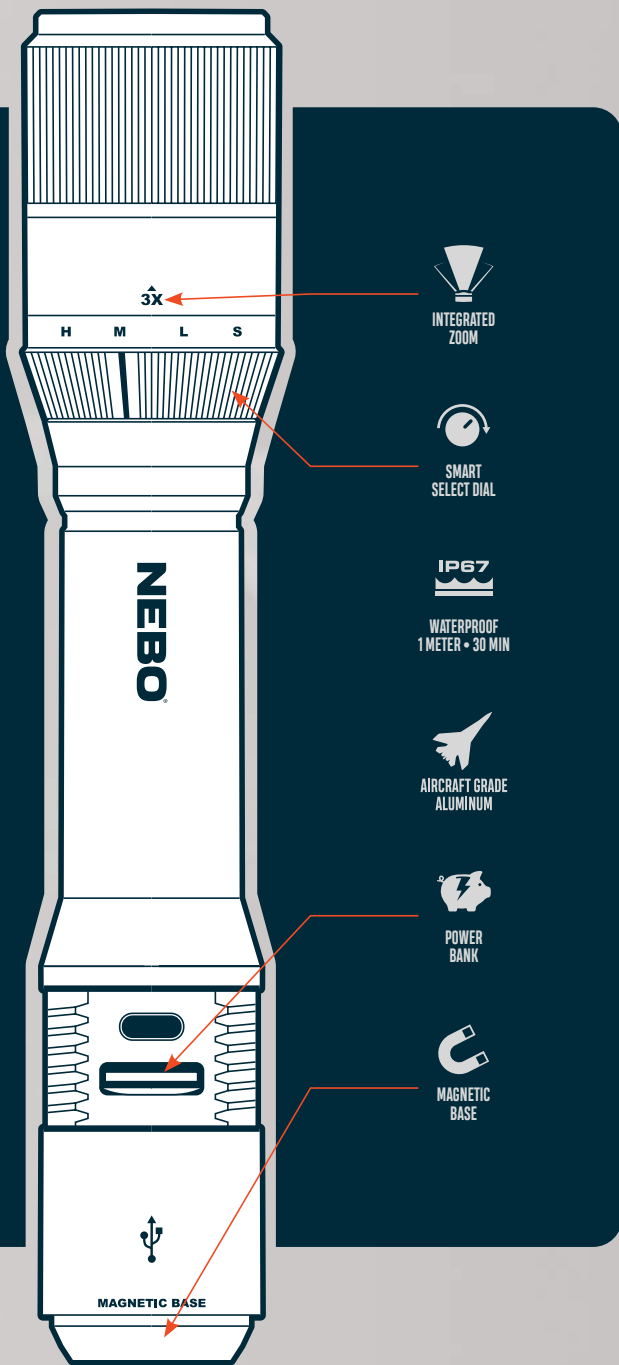
NEBO[®]

A COMPANY OF RESTLESS INVENTORS

At NEBO, we believe that breakthroughs and big ideas always require unconventional thinking. Having sold over 30 million of the world's best-selling lines of innovative, consumer-friendly flashlights and tools, we never stop creating. We dream, design and produce our products, seeing them through every phase of development. We continually innovate so that we can offer the highest quality LED lighting products at the best price, so that you can keep making and doing.

We exist to bring light to what you do.

NEBO®





TURN IT ON AND SEE WHY NEBO IS BETTER

CUTTING EDGE TECHNOLOGY

We expand the possibilities for our consumers by offering more than just the brightest lights on the market. Our lights can swivel, twist, pop, orbit, charge, strobe, and zoom...just to name a few features.

BETTER DESIGN

Our innovation goes beyond hi-tech features, we design better looking and better feeling lights. Our simple and clean design extends across every consumer item from products to packaging.

HIGHER QUALITY

At NEBO, we source the highest quality materials to meet expectations from the highest demanding working, exploring and creating situations. From flashlights, headlamps, lanterns, to a variety of work lights, our products are tested and trusted by professionals.

COMPANY BACKED

We stand behind our products. NEBO offers a 2-year limited manufacturer's warranty. Any item that does not perform properly can be returned.

ENGINEERED IN THE USA

Every day, product designers and engineers work hard at our home base in Fort Worth, Texas to design and engineer the most innovative products for our dealers and consumers.

LASTING PARTNERSHIPS

For the past 15 years, NEBO has partnered with more than 40,000 independent retail stores in over 50 countries to bring new, exciting lighting ideas. Now, we are proud to offer our newest line of NEBO products to mass retail stores across the World.

THE GOOD STUFF

OTHERWISE KNOWN AS THE TABLE OF CONTENTS

Calling all doers and dabblers, thinkers and tinkerers...
keep on creating, experimenting and exploring. We'll continue
to imagine new ways to bring light to what you do.

08 NEW FOR 2022

20 DAVINCI SERIES

22 NEWTON SERIES

24 FRANKLIN SERIES

26 COLUMBO SERIES

28 EINSTEIN SERIES

30 GALILEO SERIES

34 CLASSIC SERIES

37 COUNTERTOP & GIFTBOX RANGE

54 NEBO DISPLAYS



THE TECH

THE GEARS AND GUTS THAT GET IT GOING

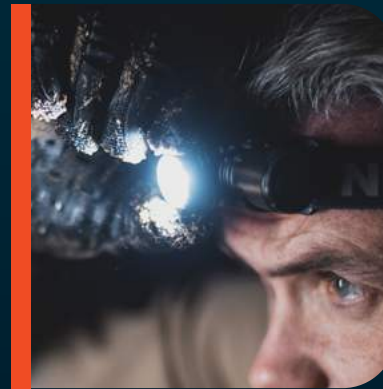
In a world of rapidly changing technology, keeping up with the latest trends is hard, but doing so only takes you as far as someone else has already gone. At NEBO, we like to explore uncharted territories. That's the trailblazer mind-set. What makes NEBO better? What makes NEBO different? the answers can be found in our technology where instead of just asking why, we ask "why not?"



OPTIMIZED
C·O·B

OPTIMISED C·O·B

Designed for both industry-leading brightness and zoom capability, Optimised C·O·B provides brilliant illumination in spot mode, and a perfectly dispersed flood light beam with our integrated OC Technology.



SMART POWER CONTROL

Smart Power Control creates a seamless transition through light modes to extend battery life.



OC™ TECHNOLOGY

OC (Optimised Clarity) Technology creates a perfectly dispersed beam of intense, pristine light that is as bright on the edge as it is in the center when used in flood mode.



FLEX-POWER™ TECHNOLOGY

Flex-Power provides operation with rechargeable batteries or disposable alkaline batteries.

NEBO LUXTREME[®] SL100 SPOTLIGHT

NEW!

AVAILABLE IN
2022
SPRING / SUMMER



LIGHT MODES

- L-E-P (280 lumens) - 6.25 hours / 1600 meters
 - White C-O-B (500 lumens) - 13.75 hours / 42 meters
 - Red C-O-B (30 lumens) - 12 hours / 6 meters
 - L-E-P + White C-O-B (525 lumens) - 10.25 hours / 1496 meters
- *Continuous run time with included 12V adapter

DESIGN

- L-E-P (Laser Excited Phosphor) Technology
- Rechargeable
- Mode Select Dial
- Lockout Mode
- Smart Power Control
- Tripod mountable (1/4-20)
- Reversible/removable steel clip
- Powerful magnetic base
- LED power/charging indicator
- Waterproof (IP67) and impact-resistant
- Anodised aircraft-grade aluminium
- Ergonomic rubberised grip

OPERATION

- Front-positioned, ON/OFF trigger button;
- rear-positioned Mode Select Dial

ACCESSORIES

- 12V power adapter (included)
- Lanyard (included)
- USB-C to USB charging cable (included)

BATTERIES

- Powered by two 21700 rechargeable batteries (included)
- Recharge time: 3 hours (2.0A) - 12 hours (0.5A)

DIMENSIONS

- Weight: 204 grams
- Length: 120mm
- Width: 60mm
- Height: 200mm



Laser Excited Phosphor generates a stable light beam over incredible distances.



Smart Power Control™ creates a seamless transition through light modes to extend battery life.



1 MILE LIGHT BEAM SPOT LIGHT

The LUXTREME SL100 is a powerful **525 lumen, rechargeable, waterproof** (IP67) spot light that utilises **L-E-P Technology** to produce an impressive **1 mile light beam**. The rugged SL100 is also equipped with a 12V adapter for continuous use and several hands-free options: a powerful **magnetic base, 1/4-20 tripod mount, and a reversible/removable steel clip**.

EAN CODE	ITEM	DESCRIPTION
5060063229362	NEB-SPT-1001-G	LUXTREME SL100

INNER CARTON: 6
OUTER CARTON: 12

- Each LUXTREME SL100 comes packaged in gift box packaging.

Gift box Dimensions

- (L) 215 x (W) 80 x (H) 308mm





CONTINUOUS
POWER

1 MILE
LIGHT BEAM



NEBO LUXTREME[®] SL75 SPOTLIGHT

NEW!

AVAILABLE IN
2022
SPRING / SUMMER



LIGHT MODES

- High (780 lumens) - 5 hours / 1200 meters
 - Medium (400 lumens) - 10.5 hours / 793 meters
 - Low (100 lumens) - 30 hours / 374 meters
- *Continuous run time with included 12V adapter

DESIGN

- Rechargeable
- Mode Select Dial
- Lockout Mode
- Smart Power Control
- Tripod mountable (1/4-20)
- Reversible/removable steel clip
- Powerful magnetic base
- LED power/charging indicator
- Waterproof (IP67) and impact-resistant
- Anodised aircraft-grade aluminium
- Ergonomic rubberised grip

OPERATION

- Front-positioned, ON/OFF trigger button;
- rear-positioned Mode Select Dial

ACCESSORIES

- 12V power adapter (included)
- Lanyard (included)
- USB-C to USB charging cable (included)

BATTERIES

- Powered by two 21700 rechargeable batteries (included)
- Recharge time: 3-12 hours (2.0A - 0.5A)

DIMENSIONS

- Weight: 667 grams
- Length: 120mm
- Width: 60mm
- Height: 205mm



Smart Power Control™ creates a seamless transition through light modes to extend battery life.



3/4 MILE LIGHT BEAM SPOT LIGHT

The LUXTREME SL75 is a powerful **780 lumen, rechargeable, waterproof** (IP67) spot light featuring an impressive **3/4 mile light beam**. The rugged SL75 is also equipped with a 12V adapter for continuous use and several hands-free options: a powerful **magnetic base, 1/4-20 tripod mount, and a reversible/removable steel clip**.

EAN CODE	ITEM	DESCRIPTION
5060063229355	NEB-SPT-1000-G	LUXTREME SL75

INNER CARTON: 6
OUTER CARTON: 12

- Each LUXTREME SL75 comes packaged in gift box packaging.

Gift box Dimensions

- (L) 215 x (W) 80 x (H) 308mm





CONTINUOUS
POWER

3/4 MILE
LIGHT BEAM



NEBO LUXTREME[®] SL50 SPOTLIGHT

NEW!

AVAILABLE IN
2022
SPRING / SUMMER



LIGHT MODES

- High (450 lumens) - 8 hours / 800 meters
- Medium (250 lumens) - 19 hours / 565 meters
- Low (50 lumens) - 40 hours / 246 meters
- * Continuous run time with included 12V adapter

DESIGN

- Rechargeable
- Mode Select Dial
- Lockout Mode
- Smart Power Control
- Tripod mountable (1/4-20)
- Reversible/removable steel clip
- Powerful magnetic base
- LED power/charging indicator
- Waterproof (IP67) and impact-resistant
- Anodised aircraft-grade aluminium
- Ergonomic rubberised grip

OPERATION

- Front-positioned, ON/OFF trigger button; rear-positioned Mode Select Dial

ACCESSORIES

- 12V power adapter (included)
- Lanyard (included)
- USB-C to USB charging cable (included)

BATTERIES

- Powered by two 21700 rechargeable batteries (included)
- Recharge time: 3 hours (2.0A) - 12 hours (0.5A)

DIMENSIONS

- Weight: 606 grams
- Length: 100mm
- Width: 60mm
- Height: 195mm



Smart Power Control™ creates a seamless transition through light modes to extend battery life.



1/2 MILE LIGHT BEAM SPOT LIGHT

The LUXTREME SL50 is a powerful **450 lumen, rechargeable, waterproof** (IP67) spot light featuring an impressive **1/2 mile light beam**. The rugged SL50 is also equipped with a 12V adapter for continuous use and several hands-free options: a powerful **magnetic base, 1/4-20 tripod mount, and a reversible/removable steel clip**.

EAN CODE	ITEM	DESCRIPTION
5060063229294	NEB-SPT-1003-G	LUXTREME SL50

INNER CARTON: 6
OUTER CARTON: 12

- Each LUXTREME SL50 comes packaged in gift box packaging.

Gift box Dimensions

- (L) 215 x (W) 80 x (H) 308mm





MAGNETIC BASE



1/2 MILE LIGHT BEAM



NEBO LUXTREME[®] SL25R

FLOOD LIGHT + SPOTLIGHT

NEW!

AVAILABLE IN
2022
SPRING / SUMMER



LIGHT MODES

- Spot (500 lumens) - 2 hours / 400 meters
- Flood (300 lumens) - 3.5 hours / 25 meters
- Red Flood (30 lumens) - 6 hours / 12 meters

DESIGN

- USB-C Rechargeable
- Mode Select Dial
- Smart Power Control
- Tripod mountable (1/4-20)
- Reversible/removable steel clip
- Powerful magnetic base
- LED power/charging indicator
- Waterproof (IP67) and impact-resistant
- Anodised aircraft-grade aluminium
- Ergonomic rubberised grip

OPERATION

- Front-positioned, ON/OFF trigger button; rear-positioned Mode Select Dial

ACCESSORIES

- Lanyard (included)
- USB-C to USB charging cable (included)

BATTERIES

- Powered by (1) 18650 rechargeable battery (included)
- Recharge time: 2 hours (2.0A) - 8 hours (0.5A)
- Additional battery storage compartment

DIMENSIONS

- Weight: 365 grams
- Length: 93mm
- Width: 60mm
- Height: 180mm



Smart Power Control™ creates a seamless transition through light modes to extend battery life.



1/4 MILE LIGHT BEAM WITH DIRECT-TO-RED C·O·B FLOOD LIGHT + SPOT LIGHT

The powerful LUXTREME SL25R is **rechargeable**, **waterproof** (IP67), and features a white or direct-to-red C·O·B flood light and **1/4 mile light beam** spot light. The ruggedly designed SL25R is also equipped with several hands-free options: a powerful **magnetic base**, **1/4-20 tripod mount**, and a **reversible/removable steel clip**.

EAN CODE	ITEM	DESCRIPTION
5060063229379	NEB-SPT-1004-G	LUXTREME SL25R

INNER CARTON: 6
OUTER CARTON: 12

- Each LUXTREME SL25R comes packaged in gift box packaging.

Gift box Dimensions

- (L) 180 x (W) 80 x (H) 278mm





CONTINUOUS
POWER



DIRECT-TO-RED
EMERGENCY MODE



NEBO INSPECTOR™ 500+

NEW!

AVAILABLE IN
2022
SPRING / SUMMER



PENLIGHT MODES (RECHARGEABLE BATTERY)

- Turbo (500 lumens) - 30 sec / 142 meters
- High (250 lumens) - 3.5 hours / 98 meters
- Low (25 lumens) - 8 hours / 31 meters
- Strobe (250 lumens) - 2.5 hours / 98 meters

AREA LIGHT MODES (RECHARGEABLE BATTERY)

- Turbo (400 lumens) - 30 sec / 16 meters
- High (200 lumens) - 3.5 hours / 11 meters
- Low (20 lumens) - 8 hours / 6 meters
- Strobe (200 lumens) - 2.5 hours / 11 meters

DESIGN

- Rechargeable
- Flex-Power™ Technology
- Smart Power Control
- Direct-to-Low
- Steel belt/pocket clip
- Anodised aircraft-grade aluminium
- Waterproof (IPX7) and impact-resistant
- Powerful magnetic base
- Battery charging indicator

OPERATION

- Rear-positioned, ON/OFF button

ACCESSORIES

- Micro USB to USB charging cable (included)

BATTERIES

- Powered by either 2 AAA batteries or 1 10850 rechargeable battery (included)
(Recharge time: approx. 2 hours)

DIMENSIONS

- Weight: 65 grams
- Length: 20mm
- Width: 20mm
- Height: 156mm / 165mm extended



EXPANDABLE AREA
LIGHT / LANTERN

RECHARGEABLE, WATERPROOF PENLIGHT & EXPANDABLE AREA LIGHT

The INSPECTOR 500+ is a powerful **500 lumen, rechargeable, waterproof** (IPX7) penlight and expandable area light. The INSPECTOR 500+ is equipped with a powerful magnetic base, steel clip, 4 light modes and features **Flex-Power Technology**, which allows the light to be powered by rechargeable or AAA batteries.

EAN CODE	ITEM	DESCRIPTION
5060063228945	NEB-POC-1000-G	INSPECTOR 500+
5060063228952	NEB-DSP-1009-G	INSPECTOR 500+ Display

INNER CARTON: 6
OUTER CARTON: 12

COUNTERTOP DISPLAY (Display sold separately)

'Try Me' sample not included

- Display showcases 1 'try me' piece in front. Additional pieces can be stored at the back.

- Each INSPECTOR 500+ comes

packaged in a gift box.
Display Dimensions
• (L) 165 x (W) 145 x (H) 235mm
Gift box Dimensions
• (L) 28 x (W) 20 x (H) 163mm





WATERPROOF
IPX7



OUR BRIGHTEST
PENLIGHT
EVER



NEBO TRANSCEND 1500

NEW!

AVAILABLE IN
2022
SPRING / SUMMER



LIGHT MODES

- Turbo (1500 lumens) - 30 sec* / 129 meters
*After 30 seconds, light returns to the previously used mode to prevent overheating and protect the battery. Turbo mode can be reactivated at any time.
- High (750 lumens) - 4 hours / 91 meters
- Medium (300 lumens) - 5.5 hours / 58 meters
- Low (30 lumens) - 28 hours / 18 meters
- Strobe - (750 lumens) - 4 hours / 91 meters

DESIGN

- USB-C rechargeable
- Smart Power Control (SPC)
- Detachable head strap mount with adjustable tilt
- Powerful magnetic base
- Direct-to-Low feature
- Battery charging indicator
- Anodised aircraft-grade aluminium
- Waterproof (IPX7) and impact-resistant

OPERATION

- Side-positioned, ON/OFF button
- Mode Selector Dial

ACCESSORIES

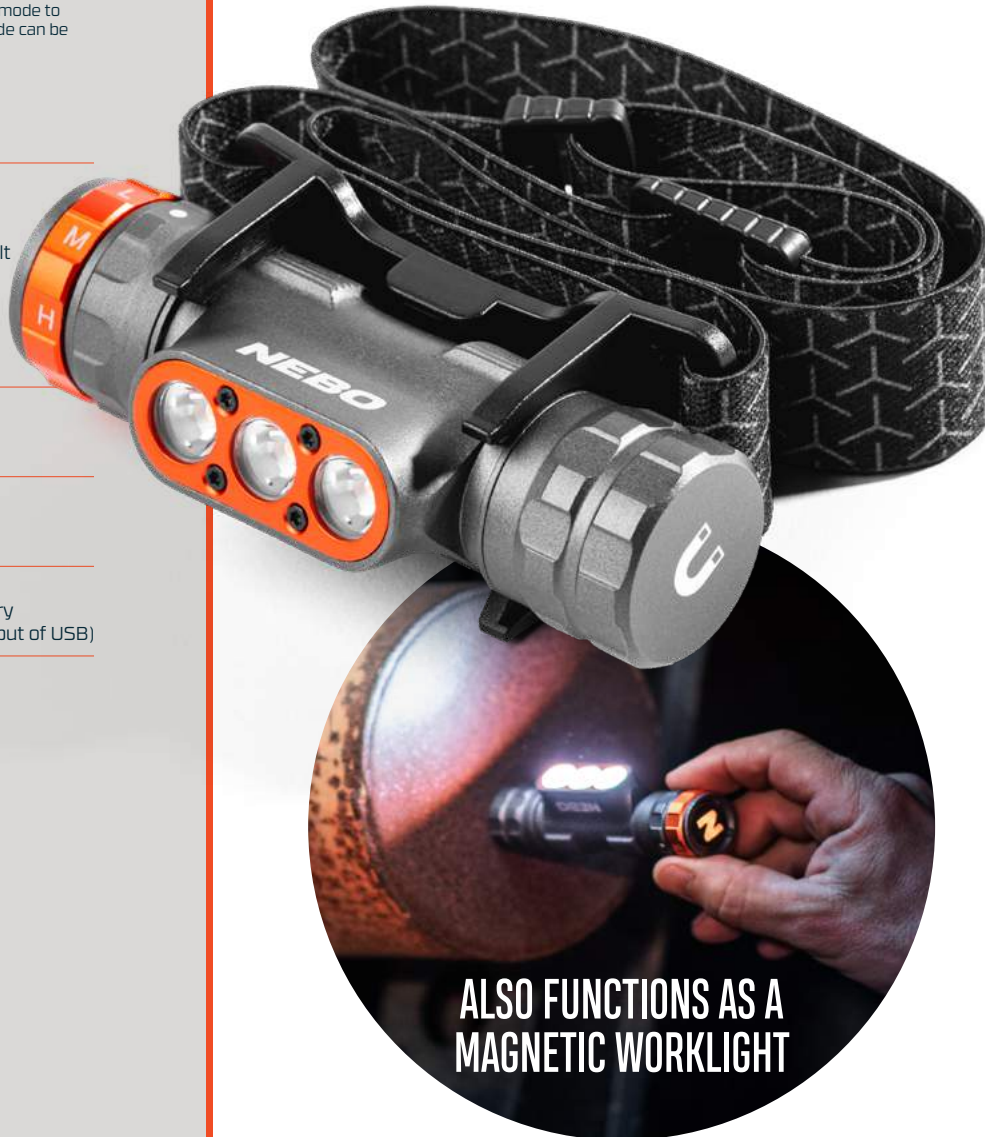
- Adjustable, reflective head strap
- USB-C to USB charging cable

BATTERIES

- Powered by internal 18650 rechargeable battery
(Recharge time: 3.5 - 7 hours, depending on output of USB)

DIMENSIONS

- Weight: 128 grams
- Length: 95mm
- Width: 36mm
- Height: 28mm (light and mount)



ALSO FUNCTIONS AS A
MAGNETIC WORKLIGHT

RECHARGEABLE HEADLAMP WITH 1,500 LUMEN TURBO MODE

The TRANSCEND 1500 is a powerful, **USB-C rechargeable** headlamp that features a **1,500 lumen Turbo Mode**. The **Mode Selector Dial** and **Smart Power Control** enable the TRANSCEND to seamlessly transition through the different light modes.

EAN CODE	ITEM	DESCRIPTION
5060063229300	NEB-HLP-1001-G	TRANSCEND 1500

INNER CARTON: 6
OUTER CARTON: 12

- Each Transcend 1500 comes packaged in a gift box.

Gift Box Dimensions

- (L) 128 x (W) 60 x (H) 102mm





USB-C
RECHARGEABLE



IPX7
WATERPROOF



NEBO[®] DAVINCI™

Our DaVinci line of rechargeable flashlights offers intense, precise, adjustable lighting using a proprietary Mode Selector Dial and a sleek design.



SPC

Smart Power Control creates a seamless transition through light modes to extend battery life.



WATERPROOF
1 METER • 30 MIN



INTEGRATED
ZOOM



MAGNETIC
BASE



AIRCRAFT GRADE
ALUMINUM

WARRANTY



RECHARGEABLE



MODE
SELECTOR DIAL



POWER
BANK





DAVINCI™ 5000

5000 lm

FEATURES

- + 20 HOURS RUNTIME
- + RECHARGEABLE
- + IP67 WATERPROOF
- + 3X ZOOM
- + SMART POWER CONTROL™
- + POWER BANK
- + MODE SELECT DIAL

BATTERY Li-ion 21700

EAN 5060063228181

ITEM # NEB-FLT-0022-G



DAVINCI™ 3500

3500 lm

FEATURES

- + 20 HOURS RUNTIME
- + RECHARGEABLE
- + IP67 WATERPROOF
- + 3X ZOOM
- + SMART POWER CONTROL™
- + POWER BANK
- + MODE SELECT DIAL

BATTERY Li-ion 21700

EAN 5060063228198

ITEM # NEB-FLT-0021-G



DAVINCI™ 2000

2000 lm

FEATURES

- + 20 HOURS RUNTIME
- + RECHARGEABLE
- + IP67 WATERPROOF
- + 4X ZOOM
- + SMART POWER CONTROL™
- + POWER BANK
- + MODE SELECT DIAL

BATTERY Li-ion 18650

EAN 5060063228204

ITEM # NEB-FLT-0020-G



DAVINCI™ 1500

1500 lm

FEATURES

- + 20 HOURS RUNTIME
- + RECHARGEABLE
- + IP67 WATERPROOF
- + 3X ZOOM
- + SMART POWER CONTROL™
- + MODE SELECT DIAL
- + MAGNETIC BASE

BATTERY Li-ion 18650

EAN 5060063228211

ITEM # NEB-FLT-0019-G



DAVINCI™ 1000

1000 lm

FEATURES

- + 20 HOURS RUNTIME
- + RECHARGEABLE
- + IP67 WATERPROOF
- + 6X ZOOM
- + SMART POWER CONTROL™
- + MODE SELECT DIAL
- + MAGNETIC BASE

BATTERY Li-ion 18650

EAN 5060063228419

ITEM # NEB-FLT-0018-G



NEBO[®]

NEWTON[™]

Our Newton line of classic alkaline powered LED flashlights brings light to a wide range of projects and tasks.



EASY TOUCH

Easy Touch allows you to quickly cycle through modes with a slight touch of the button.



WATERPROOF
1 METER • 30 MIN



INTEGRATED
ZOOM



MAGNETIC
BASE



AIRCRAFT GRADE
ALUMINUM



BATTERIES
INCLUDED





NEWTON™ 1500

1500 lm

FEATURES

- + 20 HOURS RUNTIME
- + IP67 WATERPROOF
- + 3X ZOOM
- + 4 MODES
- + EASY TOUCH
- + MAGNETIC BASE
- + BATTERIES INCLUDED

BATTERY AA Alkaline

EAN 5060063228228

ITEM # NEB-FLT-0017-G



NEWTON™ 1000

1000 lm

FEATURES

- + 20 HOURS RUNTIME
- + IP67 WATERPROOF
- + 6X ZOOM
- + 4 MODES
- + EASY TOUCH
- + MAGNETIC BASE
- + BATTERIES INCLUDED

BATTERY AA Alkaline

EAN 5060063228235

ITEM # NEB-FLT-0016-G



NEWTON™ 750

750 lm

FEATURES

- + 20 HOURS RUNTIME
- + IP67 WATERPROOF
- + 3X ZOOM
- + 4 MODES
- + EASY TOUCH
- + MAGNETIC BASE
- + BATTERIES INCLUDED

BATTERY AAA Alkaline

EAN 5060063228242

ITEM # NEB-FLT-0015-G



NEWTON™ 500

500 lm

FEATURES

- + 20 HOURS RUNTIME
- + IP67 WATERPROOF
- + 4X ZOOM
- + 4 MODES
- + EASY TOUCH
- + MAGNETIC BASE
- + BATTERIES INCLUDED

BATTERY AAA Alkaline

EAN 5060063228259

ITEM # NEB-FLT-0014-G



NEBO[®]

FRANKLIN[™]

Our Franklin line of ingenious, multipurpose lights combine flashlights and varying work lights with universal retractable clips, so you can make more possible.



COB contains more LED chips to provide a stronger, more uniform beam for a greater overall lighting experience.



WATER RESISTANT



POCKET CLIP



MAGNETIC BASE



AIRCRAFT GRADE ALUMINUM



WARRANTY

2 YR



RECHARGEABLE



SLIDE



TWIST



DUAL



PIVOT



FRANKLIN™ SLIDE

500 lm

FEATURES

- + RECHARGEABLE
- + 500 LUMEN WORK LIGHT & FLASHLIGHT
- + FLASHING RED/DIRECT-TO-RED LIGHT
- + 7 LIGHTING MODES
- + IPX4
- + DIMMING OPTION
- + MAGNETIC BASE
- + RETRACTABLE CLIP

BATTERY Li-ion 18650

EAN 5060063228266

ITEM # NEB-WLT-0025-G



FRANKLIN™ DUAL

500 lm

FEATURES

- + RECHARGEABLE
- + 500 LUMEN WORK LIGHT
- + 200 LUMEN FLASHLIGHT
- + C·O·B
- + POWER MEMORY RECALL
- + MAGNETIC BASE
- + RETRACTABLE CLIP

BATTERY Li-ion 18650

EAN 5060063228273

ITEM # NEB-WLT-0022-G



FRANKLIN™ TWIST

400 lm

FEATURES

- + RECHARGEABLE
- + SPOT
- + IPX4
- + 6 LIGHTING MODES
- + 360° C·O·B LANTERN
- + MAGNETIC BASE
- + DIMMING OPTION
- + RETRACTABLE CLIP
- + 4X ZOOM

BATTERY Li-ion 18650

EAN 5060063228280

ITEM # NEB-WLT-0024-G



FRANKLIN™ PIVOT

300 lm

FEATURES

- + RECHARGEABLE
- + SPOT, WHITE C·O·B, RED C·O·B
- + 7 LIGHTING MODES
- + IPX4
- + DIRECT-TO-RED FUNCTION
- + MAGNETIC BASE
- + DIMMING OPTION
- + RETRACTABLE CLIP

BATTERY Li-ion 18650

EAN 5060063228297

ITEM # NEB-WLT-0023-G



NEBO[®] COLUMBO[™]

Our Columbo line of slender, powerful pen lights have convenient pocket clips so you can inspect and sleuth anywhere you go.

EASY TOUCH

Easy Touch allows you to quickly cycle through modes with a slight touch of the button.

FLEX-POWER

Flex-Power allows this light to run on the charged internal battery or disposable alkaline batteries.





COLUMBO™ 250 FLEX

250 lm

FEATURES

- + FLEX-POWER™
- + RECHARGEABLE
- + IP67 WATERPROOF
- + TWIST ZOOM
- + 3 LIGHT MODES
- + POCKET CLIP

BATTERY Li-ion 10850

EAN 5060063228327

ITEM # NEB-POC-0008-G



COLUMBO™ 150

150 lm

FEATURES

- + IP67 WATERPROOF
- + 3 LIGHT MODES
- + 4X ZOOM
- + POCKET CLIP
- + BATTERIES INCLUDED

BATTERY AAA Alkaline

EAN 5060063228310

ITEM # NEB-POC-0007-G



COLUMBO™ 100

100 lm

FEATURES

- + IP67 WATERPROOF
- + TWIST ZOOM
- + 3 LIGHT MODES
- + POCKET CLIP
- + BATTERIES INCLUDED

BATTERY AAA Alkaline

EAN 5060063228303

ITEM # NEB-POC-0006-G



NEBO[®] EINSTEIN[™]

Our Einstein line of compact, lightweight cap lights and headlamps offer adjustable portable lighting so you can keep your hands free to create, fix and do.

N
EASY TOUCH

Easy Touch allows you to quickly cycle through modes with a slight touch of the button.

IPX4

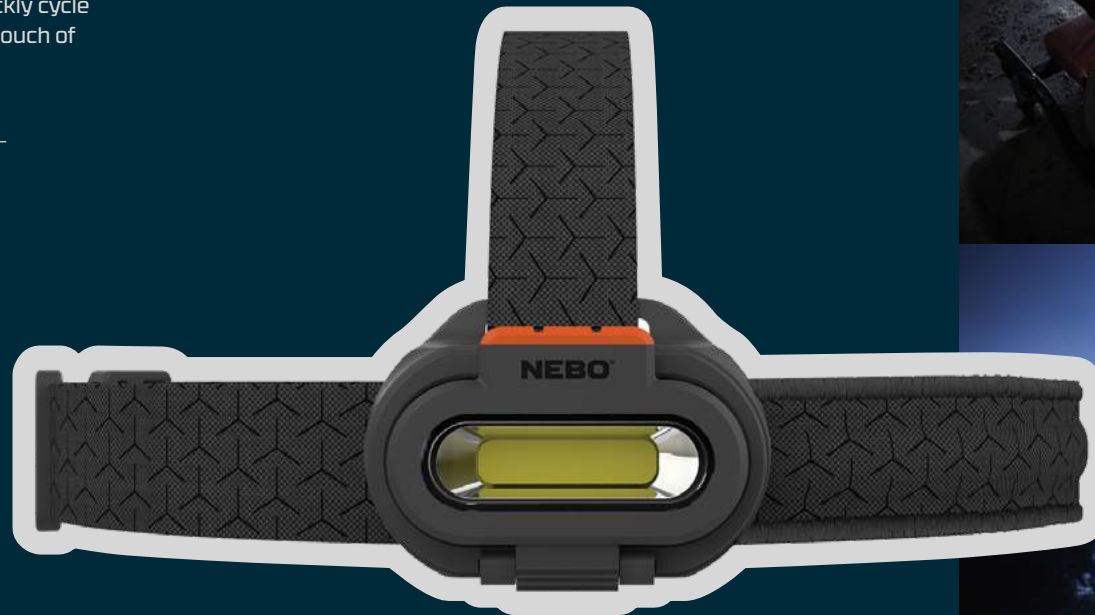
WATER
RESISTANT



COMFORTABLE
DESIGN



WARRANTY
2
YR



EINSTEIN™ 1500 FLEX

1500 lm



FEATURES

- + RECHARGEABLE
- + FLEX-POWER™
- + SMART POWER CONTROL™
- + C·O·B
- + IPX4 WEATHERPROOF
- + 5 LIGHT MODES
- + ADJUSTABLE HEADSTRAP

BATTERY Li-ion 18650
 EAN 5060063228389
 ITEM # NEB-HLP-0008-G



EINSTEIN™ 1000 FLEX

1000 lm



FEATURES

- + RECHARGEABLE
- + FLEX-POWER™
- + SMART POWER CONTROL™
- + IPX4 WEATHERPROOF
- + 5 LIGHT MODES
- + ADJUSTABLE HEADSTRAP

BATTERY Li-ion 18650 or 2xCR123A
 EAN 5060063228372
 ITEM # NEB-HLP-0007-G



EINSTEIN™ 750

750 lm



FEATURES

- + BATTERIES INCLUDED
- + IPX4 WEATHERPROOF
- + 5 LIGHT MODES
- + ADJUSTABLE HEADSTRAP

BATTERY AAA Alkaline
 EAN 5060063228365
 ITEM # NEB-HLP-0009-G



EINSTEIN™ 500

500 lm



FEATURES

- + BATTERIES INCLUDED
- + IPX4 WEATHERPROOF
- + 5 LIGHT MODES
- + ADJUSTABLE HEADSTRAP

BATTERY AAA Alkaline
 EAN 5060063228358
 ITEM # NEB-HLP-0006-G



EINSTEIN™ 400

400 lm



FEATURES

- + RECHARGEABLE
- + IPX4 WEATHERPROOF
- + 5 LIGHT MODES
- + SILICONE BAND
- + ADJUSTABLE HEADSTRAP

BATTERY Li-Poly 651730
 EAN 5060063228341
 ITEM # NEB-HLP-0005-G



EINSTEIN™ CAP

400 lm



FEATURES

- + RECHARGEABLE
- + IPX4 WEATHERPROOF
- + 3 LIGHT MODES

BATTERY Li-Poly 602535
 EAN 5060063228334
 ITEM # NEB-HLP-0004-G



NEBO[®] GALILEO[™]

Our Galileo Lanterns and Spot lights provide portable lighting for all of your explorations with Select Surround Illumination and patented Arcus LED lighting.



COB contains more LED chips to provide a stronger, more uniform beam for a greater overall lighting experience.



FLEX-POWER

Flex-Power allows this light to run on the charged internal battery or disposable alkaline batteries.



WATER
RESISTANT



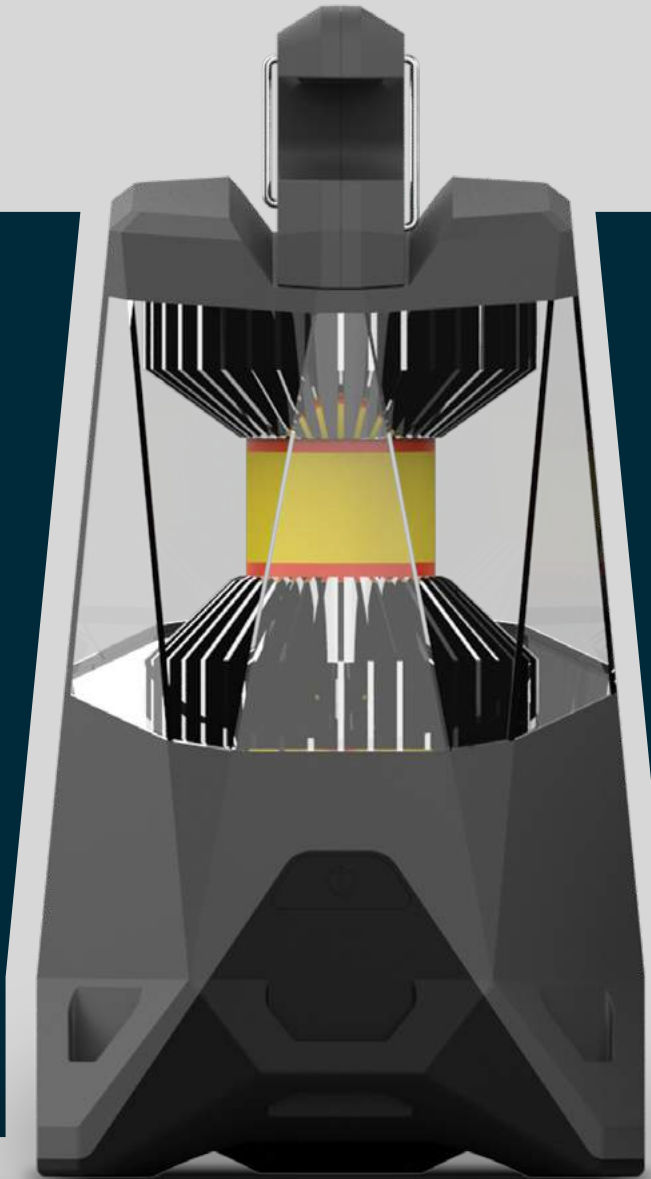
360°
LIGHTING



POWER
BANK



WARRANTY





GALILEO™ 1000 FLEX

1000 lm

FEATURES

- + POWERBANK
- + RECHARGEABLE
- + FLEX-POWER™
- + IPX4
- + C·O·B
- + 360° LIGHTING

BATTERY Li-ion 18650

EAN 5060063228402

ITEM # NEB-LTN-0004-G



GALILEO™ 500

500 lm

FEATURES

- + POWERBANK
- + RECHARGEABLE
- + IPX4
- + C·O·B
- + 360° LIGHTING

BATTERY Li-ion 18650

EAN 5060063228396

ITEM # NEB-LTN-1000-G



GALILEO™ AIR

1000 lm

FEATURES

- + POWERBANK
- + COLLAPSIBLE DESIGN
- + RECHARGEABLE
- + IPX4
- + C·O·B
- + 360° LIGHTING
- + DIRECT-TO-RED

BATTERY Li-ion 18650

EAN 5060063229317

ITEM # NEB-LTN-1003-G



NEBO GALILEO™ AIR 1000

NEW!

AVAILABLE IN
2022
SPRING / SUMMER



LIGHT MODES

- High (1,000 lumens) - 1 hour / 20 meters
- Medium (500 lumens) - 5 hours / 14 meters
- Low (100 lumens) - 10 hours / 6 meters
- Strobe (500 lumens) - 2.5 hours / 14 meters
- Red (40 lumens) - 10 hours / 5 meters
- Red Strobe (40 lumens) - 5 hours / 5 meters

DESIGN

- USB-C rechargeable
- Collapsible
- Smart Power Control™ (SPC)
- Power Bank
- Direct-to-Red
- Folding carry handle
- Battery charging indicator
- Water-resistant (IPX4)

OPERATION

- Front-positioned, ON/OFF power button

ACCESSORIES

- USB-C to USB charging cable (included)

BATTERIES

- Powered by rechargeable lithium polymer battery (104050, 3.7V, 2500mAh included)
- Recharge time: 2 hours (1.0A) - 4 hours (0.5A)

DIMENSIONS

- Weight: 285 grams
- Length: 124mm
- Width: 120mm
- Height: 57mm / 118mm extended



COLLAPSIBLE 1,000 LUMEN LANTERN + POWER BANK

The Galileo AIR 1000 is a powerful **1,000 lumen** lantern that features a space-saving, **collapsible design** for convenient portability. The **warm white light** efficiently illuminates any space while the **red light** option helps preserve night vision in low light conditions. This **rechargeable** lantern also serves as a **power bank** to charge your USB powered devices.

EAN CODE	ITEM	DESCRIPTION
5060063229317	NEB-LTN-1003-G	GALILEO™ AIR 1000

INNER CARTON: 6
OUTER CARTON: 12

- Each Galileo Air comes packaged in natralock packaging.

Natralock Dimensions

- (L) 189 x (W) 57 x (H) 256mm



SPC

Smart Power Control creates a seamless transition through light modes to extend battery life.



POWER BANK

Additional power to charge your USB powered devices.



USB
POWER BANK



COLLAPSIBLE
DESIGN



NEBO[®] CLASSIC

Our Classic line of ingenious, multipurpose lights combine flashlights and varying work lights with powerful magnetic bases and pocket clips, so you can make more possible.



COB contains more LED chips to provide a stronger, more uniform beam for a greater overall lighting experience.



WATER
RESISTANT



POCKET
CLIP



MAGNETIC
BASE



AIRCRAFT GRADE
ALUMINUM





LIL LARRY™

250 lm

FEATURES

- + IPX4 WEATHERPROOF
- + 3 LIGHT MODES
- + RED HAZARD FEATURE
- + MAGNETIC BASE
- + POCKET CLIP
- + BATTERIES INCLUDED

BATTERY AAA Alkaline

EAN 5060063228556

ITEM # NEB-6373-G



BIG LARRY™ 2

500 lm

FEATURES

- + IPX4 WEATHERPROOF
- + 4 LIGHT MODES
- + RED HAZARD FEATURE
- + MAGNETIC BASE
- + FULL DIMMING
- + POCKET CLIP

BATTERY AA Alkaline

EAN 5060063228573

ITEM # NEB-6373-G



TiNO

300 lm

FEATURES

- + IPX4 WEATHERPROOF
- + 2 LIGHT MODES
- + MAGNETIC BASE
- + FULL DIMMING
- + MODE RECALL SETTING
- + POCKET CLIP

BATTERY AAA Alkaline

EAN 5060063228570

ITEM # NEB-6809-G



450 FLEX™

450 lm

FEATURES

- + IPX4 WEATHERPROOF
- + 4 LIGHT MODES
- + MAGNETIC BASE
- + 6X ZOOM
- + RECHARGEABLE
- + POCKET CLIP

BATTERY Li-ion 14500 or 3xAAA

EAN 5060063228778

ITEM # NEB-6700-G





TAC SLYDE

300 lm

FEATURES

- + IPX4 WEATHERPROOF
- + 300 LUMEN FLASHLIGHT & 200 LUMEN WORKLIGHT
- + MAGNETIC BASE
- + RED HAZARD FEATURE
- + BATTERIES INCLUDED
- + LANYARD

BATTERY AAA Alkaline

EAN 5060063229164

ITEM # NEB-6746-G



150 HEADLAMP

150 lm

FEATURES

- + IPX4 WEATHERPROOF
- + 3 LIGHT MODES
- + ADJUSTABLE HEADSTRAP
- + BATTERIES INCLUDED

BATTERY AAA Alkaline

EAN 5060063228860

ITEM # NEB-7000-G



SLIM+

700 lm

FEATURES

- + IPX4 WEATHERPROOF
- + RED LASER
- + MAGNETIC BASE
- + FULL DIMMING
- + POWERBANK
- + POCKET CLIP

BATTERY Li-ion WT 803450

EAN 5060063229171

ITEM # NEB-6859-G



ANGLE LIGHT

220 lm

FEATURES

- + IPX4 WEATHERPROOF
- + 1 LIGHT MODE
- + MAGNETIC BASE
- + BATTERIES INCLUDED
- + HANGING HOOK

BATTERY AAA Alkaline

EAN 5060063228877

ITEM # NEB-7007-G





NEBO[®]

COUNTERTOP / GIFT BOX RANGE

NEBO 12K

LIGHT MODES

- Turbo (12,000 lumens): 30 second intervals* / 220 meters
*After 30 seconds, light returns to the previously used mode to prevent overheating and protect the battery. Turbo mode can be reactivated at any time.
- High (7000 lumens): 2 hours / 164 meters
- Medium (3000 lumens): 3 hours / 114 meters
- Low (300 lumens): 12 hours / 36 meters
- Strobe (12,000 lumens): 2 hours / 220 meters

DESIGN

- USB-C rechargeable
- USB power bank
- 2x adjustable zoom
- Smart Power Control (SPC)
- Direct-to-Low
- Power indicator
- Battery charging indicator
- Closed-Loop Temperature Control
- Anodised aircraft-grade aluminium
- Waterproof (IP67) and impact-resistant

OPERATION

- Side-positioned backlit button with power indicator

ACCESSORIES

- USB-C to USB charging cable
- Lanyard

BATTERIES

- Powered by internal rechargeable battery
(Recharge time: 7 - 28 hours, depending on output of USB)

DIMENSIONS

- Weight: 800 grams
- Height: 280mm
- Width: 60mm
- Depth: 60mm



12,000 LUMENS! NEBO'S BRIGHTEST TORCH

Rechargeable, waterproof (IP67) and extremely powerful, the 12K outputs **12,000 lumens** with our **Optimised C-O-B Technology**. The 5 impressive light modes are seamlessly transitioned through **Smart Power Control**. The backlit button serves as a power, battery and charging indicator.

EAN CODE	ITEM	DESCRIPTION
5060063228631	NEB-FLT-1007-G	12K

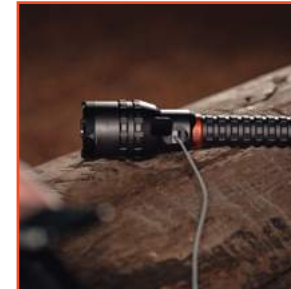
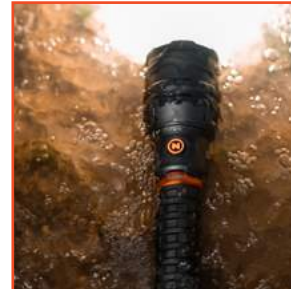
INNER CARTON: 6
OUTER CARTON: 12

GIFT BOX PACKAGING

- Each 12K comes packaged in a gift box.

Gift Box Dimensions

- (H) 325 x (W) 90 x (D) 75mm



NEBO LUXTREME

4 LIGHT MODES

- High (500 lumens) - 3 hours / 900 meters
- Medium (250 lumens) - 6 hours / 636 meters
- Low (50 lumens) - 15 hours / 201 meters
- Strobe (400 lumens) - 4 hours / 805 meters

DESIGN

- USB-C Rechargeable
- Blasts light over a half-mile away
- Smart Power Control (SPC)
- Anodised aircraft-grade aluminium body
- Direct-to-low functionality
- Sleek Storm Gray color
- IP66 Dust/Water-Resistant
- 1-meter impact resistance rating

OPERATION

- Side-positioned button controls power & modes

ACCESSORIES

- USB-C charging cable included
- User-manual
- Gift box
- Rechargeable battery

BATTERIES

- Powered by Li-ion 21700 4000mAh battery (included)
(Recharge time: 4.5 hours)

DIMENSIONS

- Weight: 340 grams
- Length: 58mm
- Width: 58mm
- Height: 200mm



INTENSE HALF MILE LIGHT BEAM

The **LUXTREME** is a revolution in long-distance lighting. This **500 lumen** light has the ability to throw its beam over a half mile. The **4 impressive light modes** are seamlessly transitioned through **Smart Power Control**. The backlit button serves as a power and charging indicator.

EAN CODE	ITEM	DESCRIPTION
5060063228624	NEB-FLT-1008-G	LUXTREME

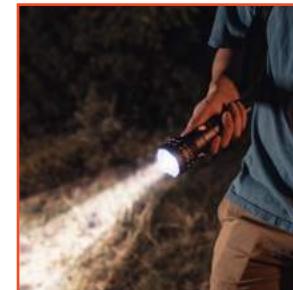
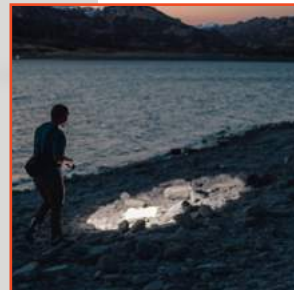
INNER CARTON: 6
OUTER CARTON: 12

GIFT BOX PACKAGING

- Each Luxtreme comes packaged in a gift box.

Gift Box Dimensions

- (H) 230 x (W) 85 x (D) 73mm



NEBO[®] MYCRO[™]

HEADLAMP & CAP LIGHT

LIGHT MODES

- Turbo (400 lumens) - 30 seconds / 80 meters
- High (150 lumens) - 1 hour / 50 meters
- Medium (50 lumens) - 2 hours / 18 meters
- Low (15 lumens) - 5 hours / 10 meters
- Green (10 lumens) - 10 hours / 14 meters
- Red (10 lumens) - 10 hours / 14 meters

DESIGN

- USB rechargeable
- SPC (Smart Power Control)
- Water (IPX4) and impact-resistant
- Battery charging indicator
- Detachable cap light clip with adjustable tilt
- Direct-to-Red feature

OPERATION

- Side-positioned button controls power and mode selection

ACCESSORIES

- Adjustable head strap; one size fits all
- Micro USB to USB charging cable included
- Rechargeable battery

BATTERIES

- Powered by Lithium Poly 3.7v 200mAh rechargeable battery (included)
(Recharge time: 2 hours)

DIMENSIONS

- Weight: 47 grams (inc. strap)
- Length: 46mm
- Width: 32mm
- Height: 34mm



THE LIGHTEST NEBO HEADLAMP & CAP LIGHT WITH 400 LUMEN TURBO MODE

The MYCRO is a **rechargeable head lamp and cap light** that includes an adjustable head strap. Small enough to fit in the palm of your hand, this powerful light features an impressive **400 lumen Turbo Mode**.

EAN CODE	ITEM	DESCRIPTION
5060063228587	NEB-HLP-0011-G	MYCRO Headlamp
5060063228594	NEB-DSP-0033-G	MYCRO Headlamp Display

**INNER CARTON: 6
OUTER CARTON: 12**

COUNTERTOP DISPLAY

- Display showcases 6 'try me' pieces in front - additional pieces can be replenished once empty.

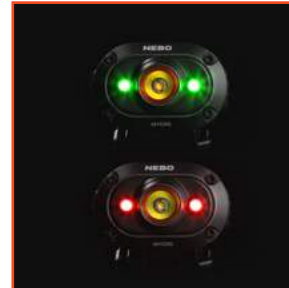
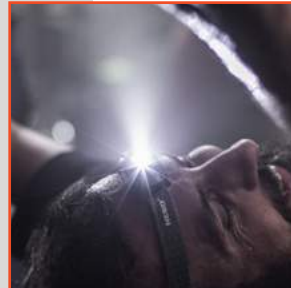
- Each MYCRO comes packaged in natralock packaging.

Display Dimensions

- (H) 280 x (W) 160 x (D) 220mm

Gift Box Dimensions

- (H) 159 x (W) 120 x (D) 38mm



NEBO TORCHY 2K

LIGHT MODES

- High (500 lumens) - 1.5 hour / 100 meters
- Medium (200 lumens) - 2 hours / 60 meters
- Low (50 lumens) - 9 hours / 30 meters
- Strobe (500 lumens) - 1.5 hour / 100 meters
- TURBO (2,000 lumens) - 30 seconds / 184 meters

DESIGN

- Rechargeable
- Anodised aircraft-grade aluminium; water and impact-resistant
- Smart Power Control
- Direct-to-Low
- Removable steel belt/pocket clip
- Power Memory Recall

OPERATION

- Side-positioned ON/OFF button with charging indicator

ACCESSORIES

- MagDock USB charging cable included

BATTERIES

- Powered by 118650 2200mAh Li-ion rechargeable battery included (4 hour recharge time)

DIMENSIONS

- Weight: 70 grams
- Length: 27mm
- Width: 27mm
- Height: 110mm



TINY RECHARGEABLE 2,000 LUMEN EDC POCKET LIGHT

The **TORCHY 2K** is **MagDock USB rechargeable**, **water-resistant (IPX6)** and is equipped with **5 light modes**, which are seamlessly transitioned through **Smart Power Control**. This powerful pocket light features a detachable 2-way clip for convenient carry and hands-free lighting.

EAN CODE	ITEM	DESCRIPTION
5060063228686	NEB-FLT-1006-G	TORCHY 2K
5060063228693	NEB-DSP-1002-G	TORCHY 2K DISPLAY

INNER CARTON: 6
OUTER CARTON: 12

COUNTERTOP DISPLAY

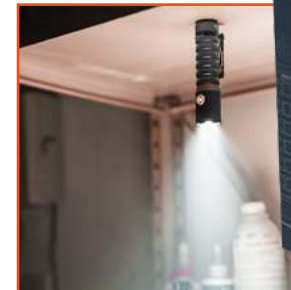
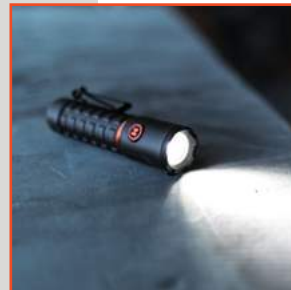
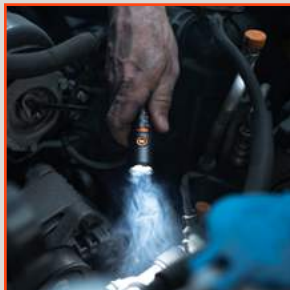
- Display showcases 1 'try me' piece in front. Additional pieces can be stored at the back. Each TorchY 2K comes packaged in a gift box.
- Each TORCHY 2K comes with a gift box.
- Multilingual card available: (EN/FR/DE/ES/IT/PL)

Display Dimensions

- (L) 140 x (W) 195 x (H) 265mm

Gift Box Dimensions

- (H) 90 x (W) 37 x (D) 130mm



NEBO

SLYDE KING 2K

FLASHLIGHT MODES

- High (2,000 lumens): 2 hours / 409 meters
- Low (200 lumens): 12 hours / 125 meters

C-O-B WORK LIGHT MODES

- White High (500 lumens): 4 hours / 34 meters
- White Low (50 lumens): 24 hours / 10 meters
- Red High (40 lumens): 6 hours / 9 meters
- Red Low (4 lumens): 60 hours / 3 meters
- Red Flash (40 lumens): 6 hours / 9 meters

DESIGN

- USB-C rechargeable
- OC™ Technology
- 4x adjustable zoom
- Dimming + Power Memory Setting
- Direct-to-Red
- Power indicator
- Battery charging indicator
- Rubberised grip
- Anodised aircraft-grade aluminium
- Waterproof (IP67) and impact-resistant
- Powerful magnetic base

OPERATION

- Side-positioned backlit button with power indicator

ACCESSORIES

- USB-C to USB charging cable
- Lanyard

BATTERIES

- Powered by internal rechargeable battery
(Recharge time: 4 - 8 hours, depending on output of USB)

DIMENSIONS

- Weight: 453 grams
- Length: 41mm
- Width: 41mm
- Height: 190mm / 244mm extended



NEW AND IMPROVED STILL THE KING

Rechargeable, waterproof (IP67) and extremely versatile, the SLYDE KING 2K features a **2,000 lumen flashlight** with 4x zoom, and a **500 lumen C-O-B work light**. Each light mode is dimmable with programmable memory. The 2K also has an ergonomic **rubberised grip** and powerful **magnetic base**.

EAN CODE	ITEM	DESCRIPTION
5060063228600	NEB-WLT-1003-G	SLYDE KING 2K
5060063228648	NEB-DSP-1004-G	SLYDE KING 2K Display

INNER CARTON: 6
OUTER CARTON: 12

Gift Box Dimensions
• (H) 49 x (W) 46 x (D) 212mm

COUNTERTOP DISPLAY

- Display showcases 1 'try me' piece in front - additional pieces can be replenished once empty.
- Each SLYDE KING 2K comes packaged in natralock packaging.
- Multilingual card available: (EN/FR/DE/ES/IT/PL)

Display Dimensions

- (H) 295 x (W) 185 x (D) 222mm



NEBO BIG LARRY 2 POWER WORK LIGHT

4 LIGHT MODES

- Work light (500 lumens) - 2.5 hours / 31 meters
- Top light (200 lumens) - 8 hours / 75 meters
- Red light (40 lumens) - 20 hours / 7 meters
- Red hazard flasher - 40 hours / 7 meters

DESIGN

- Dimmable + Memory Power Setting
- Direct-to-Red Feature
- Anodised aircraft-grade aluminium
- Water and impact-resistant
- Steel belt/pocket clip
- Powerful magnetic base

OPERATION

- Top-positioned, ON/OFF button

BATTERIES

- Powered by 3 AA batteries (included)

DIMENSIONS

- Weight: 216 g
- Length: 25mm
- Width: 32mm
- Height: 197mm



POWERFUL MAGNETIC WORK LIGHT & FLASHLIGHT

The BIG LARRY™ 2 outputs 500 lumens with the C•O•B work light and 200 lumens from the top flashlight. The red C•O•B light is perfect for distress signaling or roadside emergencies. The steel clip and magnetic base provide convenient hands-free lighting options.

EAN CODE	ITEM	DESCRIPTION
5060063226859	NE6737	BIG Larry 2

INNER CARTON: 14
OUTER CARTON: 56

COUNTERTOP DISPLAY

- Display showcases 2 pieces, 12 additional pieces included as replenishments.
- Each BIG Larry 2 comes with a gift box.
- Multilingual card available: (EN/FR/DE/ES/IT/PL)

Display Dimensions

- (L) 140 x (W) 195 x (H) 290mm

Colour Assortment:

- 4 Red / 10 Storm Gray

Gift Box Dimensions

- (L) 32 x (W) 25 x (H) 200mm



NEBO

the **BIG Larry** PRO POWER WORK LIGHT

3 LIGHT MODES

- High (500 lumens) - 4.5 hours / 37 meters
- Red (45 lumens) - 8 hours / 13 meters
- Red hazard flasher - 24 hours / 13 meters

DESIGN

- Fully dimmable
- Direct-to-Red
- Anodised aircraft-grade aluminium; water and impact-resistant
- Adjustable clip
- Powerful magnetic base
- Battery charging indicator

OPERATION

- Top-positioned, ON/OFF button

ACCESSORIES

- Two magnetic charging stations and cables

BATTERIES

- Powered by 1 Li-ion rechargeable battery (included)
(Recharge time: 5 - 6 hours)

DIMENSIONS

- Weight: 216 g
- Length: 300mm
- Width: 25mm
- Height: 197mm



500 LUMEN RECHARGEABLE WORK LIGHT WITH BUILT IN CLIP

The **BIG Larry**® PRO is a professional, high-power **500 lumen C-O-B work light** and **red hazard flasher**. Fully rechargeable and equipped with **2 magnetic charging stations**, the BIG Larry® PRO is ready to handle any task at any time. The PRO also has a **powerful magnetic base** and **adjustable steel clip** for convenient hands-free lighting. When there is work to be done...bring a PRO!

EAN CODE	ITEM	DESCRIPTION
5060063225548	NE6640	BIG LARRY PRO

INNER CARTON: 12
OUTER CARTON: 24

COUNTERTOP DISPLAY

- Display showcases 1 piece in front - additional pieces are stored in the back of the display.

- Each BIG Larry PRO comes with a luxury gift box.

Display Dimensions

- (L) 320 x (W) 220 x (H) 245mm

Gift Box Dimensions

- (L) 131 x (W) 45 x (H) 242mm



NEBO

the **Lil Larry**
POWER POCKET LIGHT

3 LIGHT MODES

- High (250 lumens) - 3 hours / 29 meters
- Low (95 lumens) - 10 hours / 17 meters
- Red Flash - 10 hours

DESIGN

- Anodised aircraft-grade aluminium; water and impact-resistant
- Steel pocket clip
- Powerful magnetic base

OPERATION

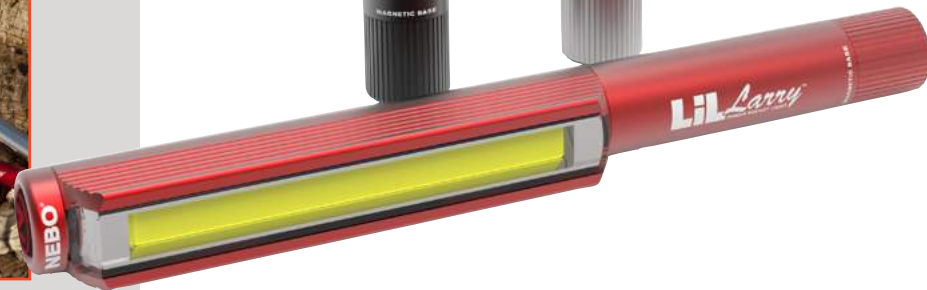
- Top-positioned, ON/OFF button

BATTERIES

- Powered by 3 AAA batteries (included)
- Flex-Fuel allows operation with just 2 AAA

DIMENSIONS

- Weight: 91 g
- Length: 20mm
- Width: 15mm
- Height: 154mm



250 LUMEN MAGNETIC WORKLIGHT WITH RED HAZARD MODE

Don't let the name fool you, **LIL LARRY™** packs enough power to take its rightful place in the Larry family. Equipped with a **250 lumen C-O-B work light**, LIL LARRY™ features 3 light modes: **high, low and emergency red flash**. The anodised aluminium body and recessed LED housing ensure that LIL LARRY is ready for any task. **Flex-Fuel™** allows the Lil Larry to condense in size and operate with 2 AAA batteries instead of 3 AAA.

EAN CODE	ITEM	DESCRIPTION
5060063224176	NE6373	LIL LARRY

INNER CARTON: 18
OUTER CARTON: 108

Colour Assortment:

- 4 Red, 4 Silver & 10 Black

COUNTERTOP DISPLAY

- Display includes area for testing magnetic base. 'TRY ME' purposes only, not intended for display.

- Each Lil Larry comes with a gift box.

- Multilingual card available: (EN/FR/DE/ES/IT/PL)

Display Dimensions

- (L) 140 x (W) 195 x (H) 255mm

Gift Box Dimensions

- (L) 25 x (W) 19 x (H) 160mm



NEBO™ TiNO

LIGHT MODES

- Spot Light (300 lumens) - 2 hours / 135 meters
- Work Light (250 lumens) - 3 hours / 25 meters

DESIGN

- Rugged plastic housing
- Water and impact-resistant
- Full dimming
- Power Memory Recall
- Belt/pocket clip with hanging hook
- Powerful magnetic base

OPERATION

- Side-positioned, ON/OFF button; hold for laser

ACCESSORIES

- Micro USB to USB charging cable (included)

BATTERIES

- Powered by 3 AAA batteries (included)

DIMENSIONS

- Weight: 95 g
- Length: 45mm
- Width: 40mm
- Height: 110mm

ASSORTED COLOURS
(Countertop only)



TWO-IN-ONE SPOTLIGHT & WORKLIGHT

The **TiNO** is a thin, ergonomic pocket light that features a **300 lumen spot light** and a **250 lumen C•O•B work light**. Equipped with full dimming and Power Memory Recall, the TiNO also features a pocket clip, collapsible hanging hook and powerful magnetic base for convenient hands-free lighting.

EAN CODE	ITEM	DESCRIPTION
5060063226989	NE6809	TiNO

INNER CARTON: 24
OUTER CARTON: 96

COUNTERTOP DISPLAY

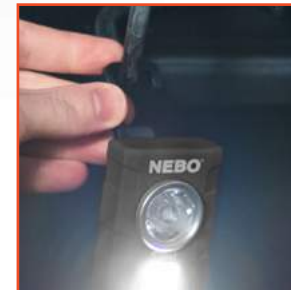
- Display showcases 3 pieces in front - additional pieces are stored in the back of the display.
- Each TiNO comes with a gift box.
- Multilingual card available: (EN/FR/DE/ES/IT/PL)

Display Dimensions

- (L) 140 x (W) 195 x (H) 265mm

Gift Box Dimensions

- (L) 45 x (W) 40 x (H) 111mm



NEBO INSPECTOR™

3 LIGHT MODES

- High (180 lumens) - 2 hours / 84 meters
- Low (54 lumens) - 6 hours / 46 meters
- Strobe (180 lumens) - 50 minutes / 84 meters

DESIGN

- Anodised aircraft-grade aluminium
- Impact-resistant and waterproof (IP67)
- 3x adjustable zoom
- Detachable steel belt/pocket clip

OPERATION

- Rear-positioned, ON/OFF button
- Soft Touch can be used only when light is OFF

BATTERIES

- Powered by 2 AAA batteries (included)

DIMENSIONS

- Weight: 62 g
- Length: 12mm
- Width: 12mm
- Height: 146mm /
Extended: 152mm



WATERPROOF PENLIGHT & AREA LIGHT

The **INSPECTOR™** is an innovative, powerful pocket light. Outputting **180 lumens**, with 3 light modes and **3x adjustable zoom**, providing the perfect amount of light for any situation. The **INSPECTOR™** is also **waterproof (IP67)** and features a removable steel clip and **Soft-Touch Technology**, which provides momentary operation when the light is off, with the slightest touch of the button.

EAN CODE	ITEM	DESCRIPTION
5060063226767	NE6713	INSPECTOR

INNER CARTON: 16
OUTER CARTON: 96

COUNTERTOP DISPLAY

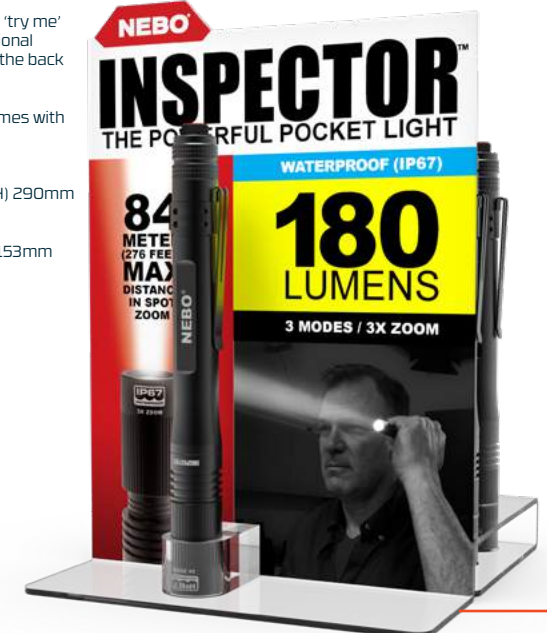
- Display showcases 1 'try me' piece in front - additional pieces are stored in the back of the display.
- Each INSPECTOR comes with a gift box.

Display Dimensions

- (L) 135 x (W) 150 x (H) 290mm

Gift Box Dimensions

- (L) 20 x (W) 14 x (H) 153mm



NEBO

BIGPOPPY™

3 LIGHT MODES

- Lantern (300 lumens) - 3 hours / 14 meters
- Spot Light (120 lumens) - 15 hours / 150 meters
- Flickering Flame (10 lumens) - 8 hours / 4 meters

DESIGN

- Rechargeable
- Power bank for USB powered devices
- Charging indicator
- Dimmable (lantern and spot light)
- Rubberised body design; water and impact-resistant
- Adjustable handle
- Power Memory Recall

OPERATION

- Side-positioned, ON/OFF button

ACCESSORIES

- USB to Micro USB charging cable included

BATTERIES

- Powered by rechargeable battery (included)(Recharge time: 2 hours)

DIMENSIONS

- Weight: 136 g
- Width: 103mm
- Height: Closed - 150mm / Open - 212mm



RECHARGEABLE FLASHLIGHT AND LANTERN WITH POWER BANK

The **BIG Poppy** is a combination **300 lumen lantern**, bright **120 lumen spot light** and **realistic flickering flame lantern**. The BIG Poppy is **rechargeable** and also serves as a **power bank** to charge other USB powered devices. The Flame Emulator produces a realistic flame without the heat and danger of real fire, creating the perfect, safe indoor or outdoor ambiance.

EAN CODE	ITEM	DESCRIPTION
5060063227719	NE6908	BIG POPPY RC

INNER CARTON: 12
OUTER CARTON: 24

COUNTERTOP DISPLAY

- Display showcases 1 'try me' piece in front - additional pieces are stored in the back of the display.

Display Dimensions

- (H) 310 x (W) 230 x (D) 162mm

Gift Box Dimensions

- (H) 160 x (W) 110 x (D) 110mm



NEBO POPPY™

LIGHT MODES

C•O•B lantern

- HIGH (300 lumens) – 7.5 hours / 15 meters
- LOW (35 lumens) – 40 hours / 6 meters

Spot-light

- HIGH (120 lumens) – 18 hours / 120 meters
- LOW (90 lumens) – 38 meters

DESIGN

- Fully dimmable
- Rubberised body design; water and impact-resistant
- Adjustable handle
- Power memory setting

OPERATION

- Side-positioned, ON/OFF button

ACCESSORIES

N/A

BATTERIES

- Powered by 3 AA batteries (included)

DIMENSIONS

- Weight: 300 g
- Length: 86mm
- Width: 86mm
- Height: 140mm / Extended: 195mm



SLIDE-TO-OPEN LANTERN WITH SPOTLIGHT & ADJUSTABLE HANDLE

POPPY™ is a combination 300 lumen C•O•B LED lantern and bright LED spot light. Poppy is the perfect light for indoor or outdoor use when versatility and powerful lighting are critical. With a rubberised impact-resistant body, POPPY™ is both rugged and soft to the touch. Poppy easily changes from spot light to lantern with just a slide of its top, revealing a full 360° C•O•B lantern. The handle is designed to easily adjust to conveniently serve both light modes.

EAN CODE	ITEM	DESCRIPTION
5060063225395	NEB-LTN-6555-G	POPPY LANTERN

INNER CARTON: 12
OUTER CARTON: 24

Gift Box Dimensions

- (L) 20 x (W) 14 x (H) 153mm



NEBO OMNI 2K



LIGHT MODES

- Dual C-O-B (2000 lumens) - 1.3 hours / 70 meters
- Dual C-O-B (250 lumens) - 5.5 hours / 22 meters
- Single C-O-B (1100 lumens) - 2 hours / 50 meters
- Single C-O-B (150 lumens) - 9 hours / 18 meters
- Red C-O-B (20 lumens) - 11 hours / 8 meters
- Red C-O-B Flash (20 lumens) - 20 hours / 8 meters

DESIGN

- USB-C rechargeable
- 4,000mAh power bank
- Rotating magnetic handles
- Rotating C-O-B panels
- Water and impact-resistant
- Non-slip rubber coating
- Battery charging indicator

OPERATION

- Rear-positioned ON/OFF button and 2 buttons for adjustable brightness

ACCESSORIES

- USB-C charging cable

BATTERIES

- Powered by internal rechargeable battery (Recharge time: 2 - 8 hours)

DIMENSIONS

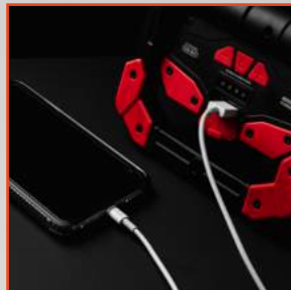
- 558 grams
- Height: Closed - 125mm / Open - 210mm
- Width: 160mm
- Diameter: Closed - 45mm / Open - 37mm



2,000 LUMEN DUAL C-O-B OMNI-DIRECTIONAL WORK LIGHT

The OMNI 2K is the ultimate, omni-directional work light that boasts a powerful **2,000 lumen, Dual C-O-B** output with **4,000mAh Power Bank**. The OMNI features rotating magnetic handles and dual C-O-B panels to provide hands-free, omni-directional light to your project. Completely rechargeable, the OMNI 2K also features a power bank to charge your USB powered devices.

EAN CODE	ITEM	DESCRIPTION
5060063227801	NE0015	OMNI 2K
INNER CARTON: 6 OUTER CARTON: 12		Gift Box • Each OMNI 2K comes with a gift box.
		Gift Box Dimensions • L) 165 x (W) 50 x (H) 127mm



NEBO TANGO™

3 LIGHT MODES

- Turbo Mode (1000 lumens) - 2 minutes
- Work Light (750 lumens) - 2 hours / 52 meters
- Spot Light (250 lumens) - 5 hours / 22 meters

DESIGN

- Fully rechargeable
- Power bank for your USB powered devices
- Full dimming
- Memory Power Setting
- Non-slip rubber coating
- Water and impact-resistant
- 180° pivoting base
- Battery charging indicator

OPERATION

- Rear-positioned, ON/OFF button; hold to dim

ACCESSORIES

- Micro USB to USB charging cable included

BATTERIES

- Powered by 18650 mAh Lithium-Ion rechargeable battery (included) (Recharge time: 5 - 6 hours)

DIMENSIONS

- Weight: 340 g
- Length: 45mm
- Width: 148mm
- Height: 148mm



RECHARGEABLE 1,000 LUMEN WORKLIGHT & POWERBANK

The **TANGO™** features 2 high-power light sources, (combined for 1000 lumen turbo mode) a **250 lumen spot light** and **750 lumen C-O-B work light**. The TANGO™ is fully **rechargeable** and also serves as a **power bank** for your USB powered devices. A seven position 180° rotating arm functions as a **hanging hook, carry handle, or a kickstand**. And best of all, use **Turbo Mode** to combine the spot light and work light for **1,000 lumens** of intense illumination. After all, it takes two to TANGO™.

EAN CODE	ITEM	DESCRIPTION
5060063225708	NE6665	TANGO

INNER CARTON: 10
OUTER CARTON: 20

Gift Box Dimensions
• L) 152 x (W) 45 x (H) 150mm

Gift Box

- Each TANGO comes with a gift box.



NEBO[®] HIGH BRIGHT 6000

LIGHT MODE

- 6,000 lumens: 80 meters

DESIGN

- Three 90° adjustable LED panels
- Quick and easy installation
- 600% more light than standard 60W bulb
- Energy efficient - only 60W

OPERATION

- Standard e27 screw base; switch ON to activate

DIMENSIONS

- 348 grams
- Height: 126mm
- Width: 130mm
- Depth: 115mm



EXTREMELY BRIGHT 6,000 LUMEN UTILITY LIGHT

Instantly upgrade garages, closets, basements and attics without batteries, rewiring or changing the fixture. This powerful **6,000 lumen light** fits in any standard e27 screw base light socket and each of the **adjustable LED panels** can be tilted 90° to direct the light exactly where you need it.

EAN CODE	ITEM	DESCRIPTION
5060063228617	NEB-OTH-0001-G	HIGH BRIGHT 6000
5060063228655	NEB-DSP-1005-G	HIGH BRIGHT 6000 Display

**INNER CARTON: 6
OUTER CARTON: 12**

FSDU DISPLAY

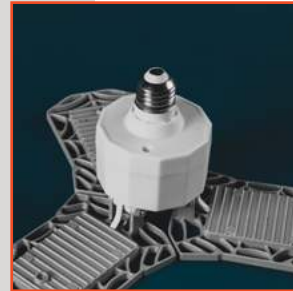
- FSDU display can hold up to 24 pcs.
- Each HIGH BRIGHT 6000 comes with a gift box.

Display Dimensions

- (L) 360 x (W) 480 x (H) 1250mm

Gift Box Dimensions

- (H) 150 x (W) 150 x (D) 150mm



NEBO

MOTION SENSOR NIGHT LIGHT

2 LIGHT MODES

- High (30 lumens): 15 seconds*
- Medium (8 lumens): 15 seconds*

DESIGN

- Smart Power Control
- Durable ABS plastic body
- Warm white light

OPERATION

- Front-positioned motion sensor

BATTERIES

- Powered by 3xAAA Alkaline batteries
- Minimum 15 seconds per activation,
- > 5,000 activations possible with NEBO alkaline batteries

DIMENSIONS

- Weight: 72g
- Length: 25mm
- Width: 63mm
- Height: 73mm

3 PACK



PERFECT FOR HALLWAYS, CLOSETS AND STAIRWAYS

Ideal for any area that needs hands-free automated lighting. The battery-operated Motion Sensor Night Light turns on automatically if any movement is detected and turns off in 15 seconds after motion ends. Equipped with 2 light modes and Smart Power Control, the Motion Sensor Night Light has a sleek, low-profile design that blends perfectly with the aesthetic of any space.

EAN CODE	ITEM	DESCRIPTION
5060063228709	NEB-WLT-0026-G	MOTION SENSOR NIGHT LIGHT (3PK)
5060063228754	NEB-DSP-0031-G	MOTION SENSOR NIGHT LIGHT DISPLAY

INNER CARTON: 6
OUTER CARTON: 12

COUNTERTOP DISPLAY

- Display holds 6 natralock packs in front - additional stock can be replenished when low.

Display Dimensions

- (L) 270 x (W) 300 x (H) 290mm

Gift Box Dimensions

- (H) 170 x (W) 50 x (D) 228mm



NEBO

Slim Line Free-Standing Display

DESIGN

- All metal construction
- One sided display
- 3 adjustable shelves / 1 footer shelf
- Two metal clip strips (optional)
- Peg hook capable (12 hooks included)

ASSEMBLY

- Easy 10 minute assembly
- Instructions, tools and plan-o-gram provided

DIMENSIONS

- Height: 160cm
- Width: 37cm
- Depth: 51cm



SHOW MORE. SELL MORE. WITH NEBO STORE DISPLAYS

The Slim-Line Free-Standing Display is ideal where space is limited as a one-sided display. The stand works perfectly for aisle or counter-top placement, and the dual branding makes this display ideal for NEBO or True Utility products.

EAN CODE	ITEM	DESCRIPTION
TBC	TBC	Slim-Line Free-Standing Display

NEBO®

SHOW MORE. SELL MORE. WITH NEBO STORE DISPLAYS

Please contact your NEBO dealer for more information on our bespoke free-standing display options.



NEBO[®]

ILLUMINATE POSSIBILITIES



Alliance Consumer Group International
Unit 2, The GP Centre Yeoman Road, Ringwood, Hants,
BH24 3FF, UK
+44(0)1202 768883

All copyrighted and copyrightable materials, including, without limitation, the logo, design, text, graphics, pictures, copy writing and the selection and arrangement ("Materials") thereof all ALL RIGHTS RESERVED Copyright ©2022 Alliance Sports Group LP.